

## Flameproof Exd Dual Certified ATEX / IECEx

### 481 (M to F) Union



#### Certification Details

- Flameproof Exd IIC Gb, Ⓔ II 2G.
- Certificate No's: Baseefa11ATEX0155U and IECEx BAS 11.0077U.
- GOST R certified.
- Operating Temperature Range -60°C to +80°C.
- Group II.

#### General Information

- Manufactured in Brass, Nickel Plated Brass, Steel, Nickel Plated Steel and Stainless Steel.
- M16 to M75 as standard.
- Other parallel thread options available on request, including BSPP, PG, ET and NPSM.
- NPT female threads can also be supplied in sizes ranging from ½" to 3".
- Suitable for use in Zone 1 and Zone 2.
- Construction and Test Standards: IEC/EN 60079-0 and IEC/EN 60079-1.
- Ingress Protection: IP54.
- Assembly Instruction Sheet: AI 407.

*Note: Different thread sizes and types are permitted at each end of the adaptor, a step of one thread size is permitted between the two threads. Where different thread types / sizes are supplied, the overall dimensions of the union may increase in size.*

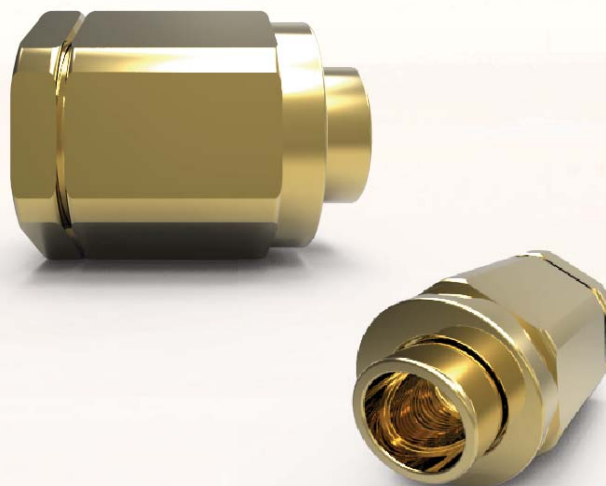
#### SELECTION TABLE

Male Thread Size	Thread Pitch (mm)	Female Thread Size	Thread Pitch (mm)	Thread Length (mm)	Across Flats (mm)	Across Corners (mm)
M16	1.5	M16	1.5	16	30	32.5
M20	1.5	M20	1.5	16	36	39.5
M25	1.5	M25	1.5	16	46	50.5
M32	1.5	M32	1.5	16	46	50.5
M40	1.5	M40	1.5	16	55	60.5
M50	1.5	M50	1.5	16	80	88.0
M63	1.5	M63	1.5	16	80	88.0
M75	1.5	M75	1.5	16	95	104.0

#### Ordering Example:

Product	Thread Size	Pitch	Material	Finish
481	M32 Male x M32 Female	1.5 mm	Brass	Nickel Plated

### 482 (F to F) Union



#### Certification Details

- Flameproof Exd IIC Gb, Ⓔ II 2G.
- Certificate No's: Baseefa11ATEX0155U and IECEx BAS 11.0077U.
- GOST R certified.
- Operating Temperature Range -60°C to +80°C.
- Group II.

#### General Information

- Manufactured in Brass, Nickel Plated Brass, Steel, Nickel Plated Steel and Stainless Steel.
- M16 to M75 as standard.
- Other parallel thread options available on request, including BSPP, PG, ET and NPSM.
- NPT female threads can also be supplied in sizes ranging from ½" to 3".
- Suitable for use in Zone 1 and Zone 2.
- Construction and Test Standards: IEC/EN 60079-0 and IEC/EN 60079-1.
- Ingress Protection: IP54.
- Assembly Instruction Sheet: AI 407.

*Note: Different thread sizes and types are permitted at each end of the adaptor, a step of one thread size is permitted between the two threads. Where different thread types / sizes are supplied, the overall dimensions of the union may increase in size.*

#### SELECTION TABLE

Female Thread Size	Thread Pitch (mm)	Female Thread Size	Thread Pitch (mm)	Thread Length (mm)	Across Flats (mm)	Across Corners (mm)
M16	1.5	M16	1.5	16	30	32.5
M20	1.5	M20	1.5	16	36	39.5
M25	1.5	M25	1.5	16	46	50.5
M32	1.5	M32	1.5	16	46	50.5
M40	1.5	M40	1.5	16	55	60.5
M50	1.5	M50	1.5	16	80	88.0
M63	1.5	M63	1.5	16	80	88.0
M75	1.5	M75	1.5	16	95	104.0

#### Ordering Example:

Product	Thread Size	Pitch	Material	Finish
482	M32 Female x M32 Female	1.5 mm	Brass	Nickel Plated